

# FOAMBOARD

2000 D - 2500 D - 3000 D - 3500 D

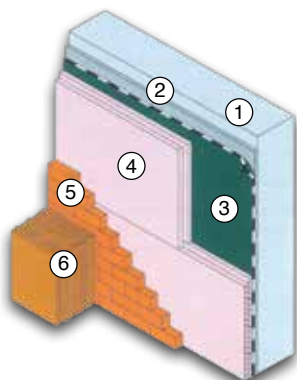


It is an extruded polystyrene board used for thermal insulation of below grade exterior walls of basements, on-grade floors of buildings.

## Application

For the thermal insulation of below grade perimeter walls Foamboard products are used with waterproofing membranes. First a plaster is spread over the wall in order to smoothen the surface and then waterproofing membrane is applied. Consequently, İzocam Foamboard is applied loose on waterproofing membrane. There is no need to adhere the boards if the application is carried out together with the erection of protection wall and earth fill. There is another method in which İzocam Foamboard is adhered to the bituminous water proofing membrane at intervals by cold bitumen. Anchoring is not used in below grade perimeter wall application in order not to drill through water proofing.

Thickness (cm)	Width x Length (cm)	Package (m <sup>2</sup> )	Package (m <sup>3</sup> )
2	60 x 120	14,40	0,2880
2,5	60 x 120	11,52	0,2880
3	60 x 120	10,08	0,3024
4	60 x 120	7,20	0,2880
5	60 x 120	5,76	0,2880
6	60 x 120	5,04	0,3024
7	60 x 120	4,32	0,3024
8	60 x 120	3,60	0,2880
9	60 x 120	2,88	0,2592
10	60 x 120	2,88	0,2880
12	60 x 120	2,16	0,2592
15	60 x 120	2,16	1,4400



- Basement wall ①
- Levelling plaster ②
- izoplan waterproofing membrane ③
- Foamboard ④
- Protection wall ⑤
- Earth fill ⑥

- High compressive strength
- High thermal insulation
- Easy to apply
- Available in different sizes
- Lightweight
- Water impermeable



# TECHNICAL DATA SHEET

## izocam Foamboard 2000 D - 2500 D - 3000 D - 3500 D

Properties	Symbol	Unit	Description													Tolerance	Standard			
Material	-	-	Extruded Polystyrene													-	TS EN 13164			
Edge Profile	-	-	Square, Ship-lap													-	-			
Surface Shape	-	-	Skin													-	-			
Density	2000 D	$\rho$	kg/m <sup>3</sup>	min. 25			min. 26			min. 27			min. 30			-			-	-
	2500 D			min. 25			min. 28			min. 30			-							
	3000 D			min. 28			min. 32			min. 29			min. 30			-				
	3500 D			min. 28						min. 30										
Width	w	mm	600													± 8 mm	TS EN 822			
Length	l	mm	1200													± 8 mm	TS EN 822			
Thickness	t	mm	20	25	30	40	50	60	70	80	90	100	120	150	T1 *	TS EN 823				
Reaction to fire	-	-	E													-	TS EN 13501-1			
Thermal Resistance	R <sub>D</sub>	m <sup>2</sup> .K/W	0,55	0,70	0,85	1,10	1,40	1,70	2,00	2,25	2,55	2,85	3,40	4,25		TS EN 13164				
Declared Thermal Conductivity (10 °C)	$\lambda_D$	W/m.K	0,035													-	TS EN 13164			
Water Vapor Diffusion Resistance Coefficient	MU	-	100													MU100	TS EN 12086			
Material Type	-	-	2000 D	2500 D	3000 D	3500 D									-	-				
Tensile Strength Perpendicular to Faces	TR	kPa	min. 200	min. 400	min. 400	min. 600									TR200 - TR400 TR600	TS EN 1607				
Compressive Strength (10 % Deformation)	$\sigma_{10}$	kPa	min. 200	min. 250	min. 300	min. 350									CS(10/Y) 200 250 300 350	TS EN 826				
Dimensional Stability Under Specified Thermal and Humidity Conditions	$\Delta\epsilon_t, \Delta\epsilon_b, \Delta\epsilon_d$	%	max. 5 **													DS (70,90)	TS EN 1604			
Dimensional Stability Under Specified Thermal and Compressive Load Conditions	$\epsilon_t$	%	max. 5 ***													DLT(1)5 DLT(2)5	TS EN 1605			
Freeze Thaw Resistance	FTCD	%	max. 1													FTCD <sub>1</sub>	TS EN 12091			
Long Term Water Absorption with Total Immersion	W <sub>it</sub>	%	max. 0,7													WL(T)0,7	TS EN 12087			
Long Term Water Absorption with Diffusion	W <sub>dv</sub>	%	max. 3													WD(V)3	TS EN 12088			
Packaging Material	-	-	PE Film													-	-			
Other Information	There is no ship-lap in 20 mm thickness.																			

\* T1 : +2 for < 50 mm; -2,+3 for 50 - 120 mm; -2,+3 for > 120 mm.  
According to customer demands can be produced in T2 or T3 thickness class.

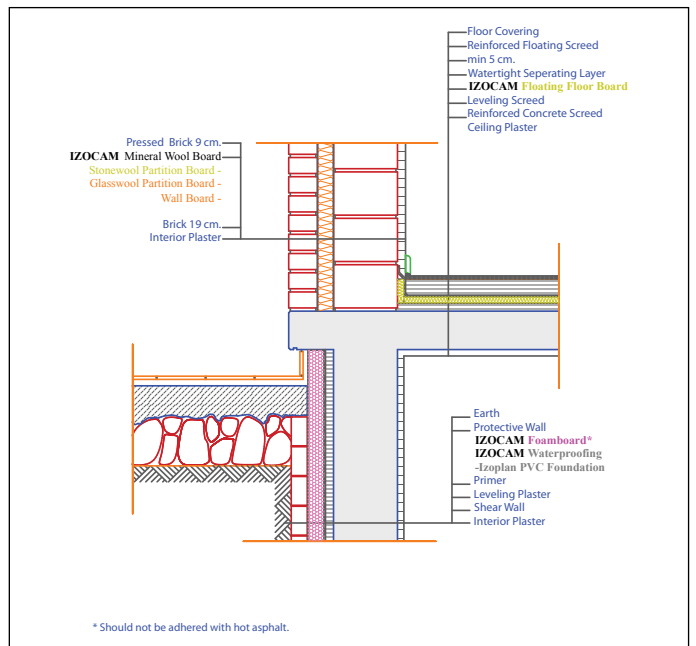
\*\* TS EN 13164 / Item 4.3.2

\*\*\* TS EN 13164 / Item 4.3.3

### Safety Reminders for Loading, Unloading, Shipping and Storing

- Loading and unloading should be done by (at least) two people.
- Products should be put on top of each other with extra care.
- Only backshutter of the truck body should be opened during unloading.
- Unloading should be carried out from backside to the front.
- Products should not be put into upright position during shipping and storing.
- Products should not be pulled by their package.
- Products should not be stepped on and should not be used as steps.
- The packages should be put on the floor with extra care so the corners of the product especially is not damaged by a hit.
- Storing can be carried out by superposing the products with or without pallets.
- Products should not be shipped with the materials containing organic solvents (thinner, paint, fuel oil, acetone, etc.).
- Combustible, flammable, hazardous materials should not be stored in storage area and there should be fire extinguishing equipment available.

Izocam is not responsible for any problem because of misprinting. Izocam, the manufacturer, reserves the right to alter product specifications without prior notice. Izocam also manufactures special products upon request. For your requirements, you are requested to contact our Export Department.



ENXPS3D2018/11